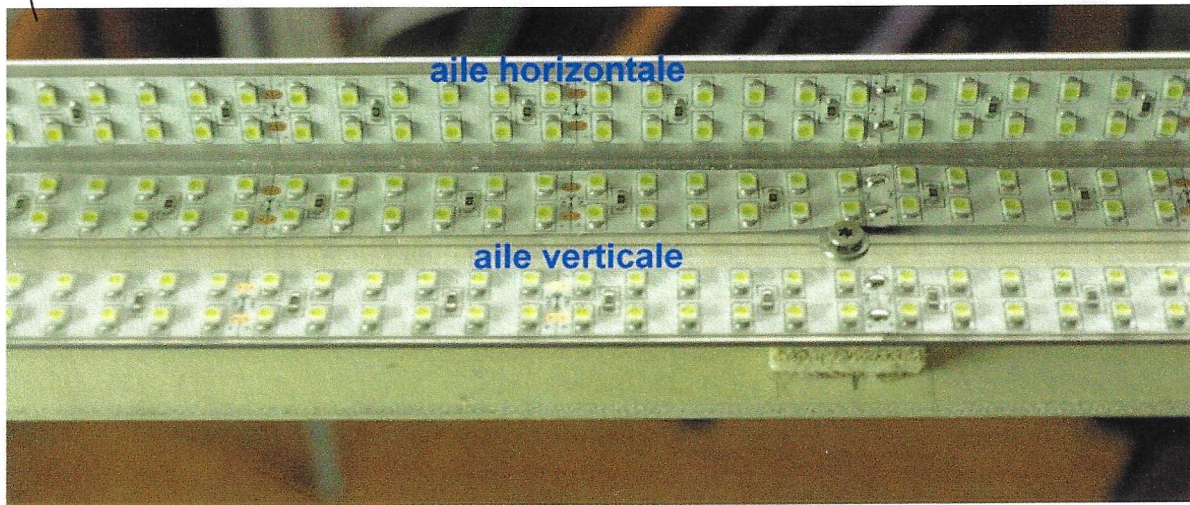


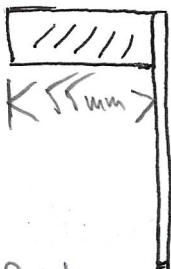
flanden 100 x 200
100 x 750

V_s 1/2 Jours
 La bande LED consomme 19,2W au mètre
 \Rightarrow 1 jauge de $1120 \times 2 = 2240$ x 3 bande LED = 10,98 mètre $19,2 \times 10,98 = 211W \rightarrow 240W$
 $1120 \times 4 = 4480$ = 14,64 mètre $19,2 \times 14,64 = 281W \rightarrow 240W$



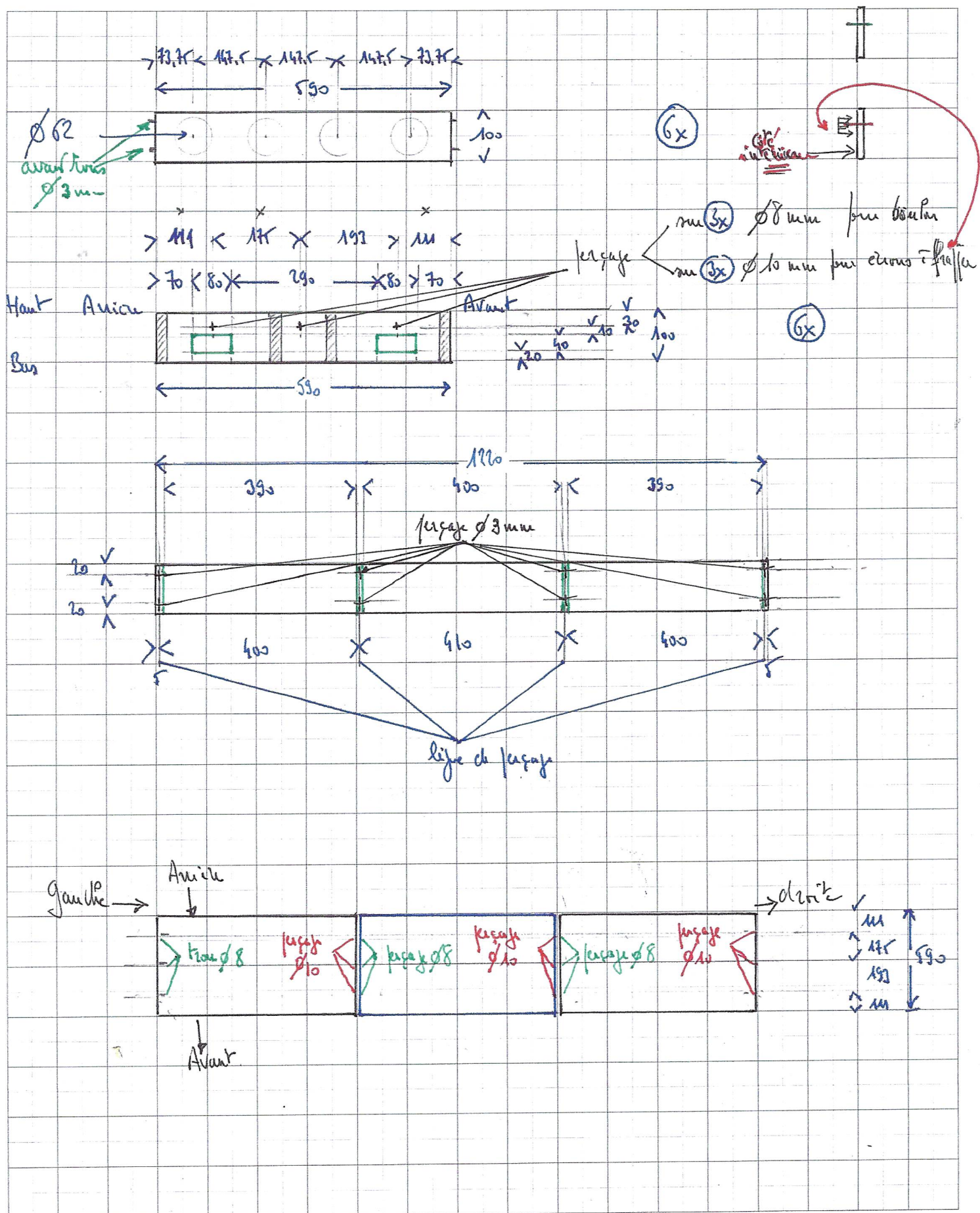
(35x) Planchette CTP
 10 mm de 35 mm x 45 mm

- Ecarteur 10 mm (côté 355 par module)
 vis 5 tête (35x), rondelle (35x)
 Lou vis 5 tête, rondelle



- bandeau CTP 5 mm
 n° 157 (2x) 1230 x 200
 n° 256 (5x) 1120 x 200
 - support bandeau CTP 15 mm
 n° 157 (2x) 1230 x 55
 n° 256 (5x) 1120 x 55
 d° pour garantir à la
 après modification du bandeau
 $n \cdot 2 = 1375 \times 200$
 $n \cdot 2 = 1375 \times 55$

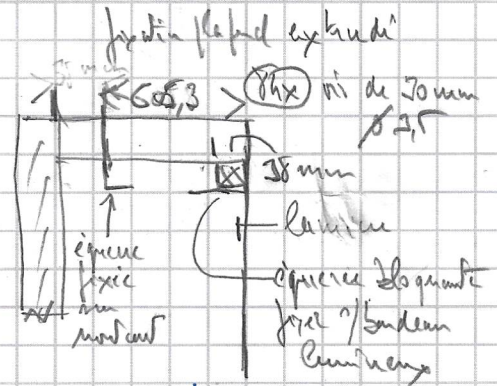
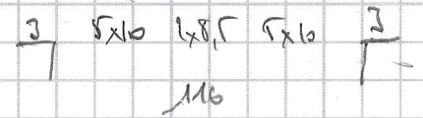
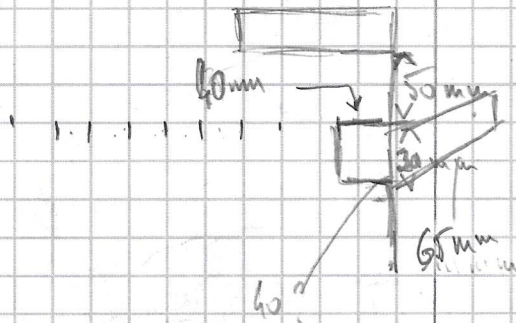
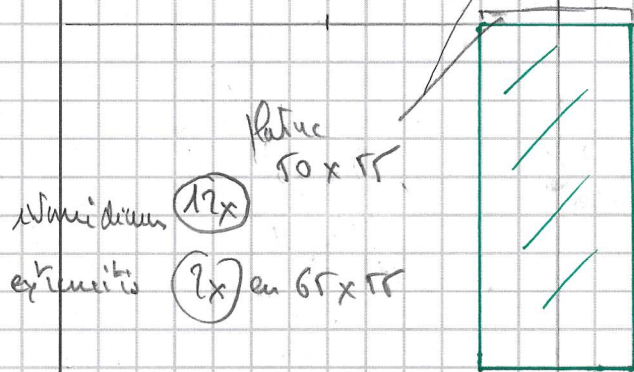
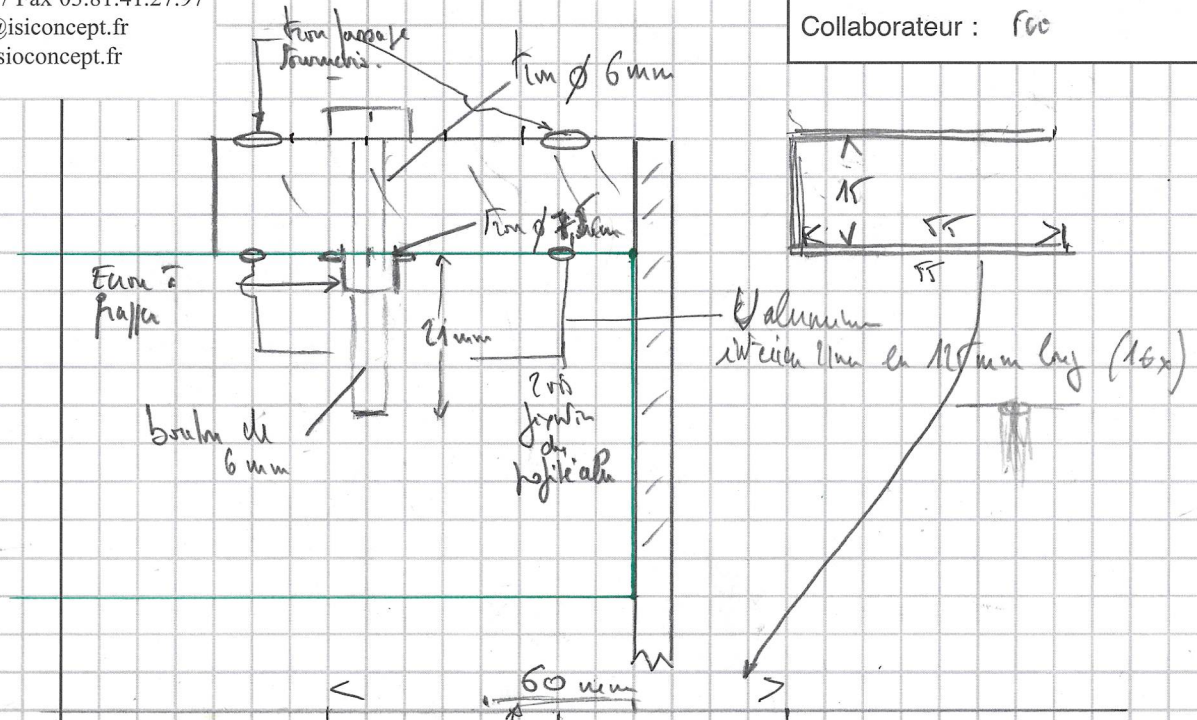
+ Planchette Module
 $7 \times 1120 \times 600 = 5,124 m^2$ (soit 1 module 10,98 m²)



Date : 02.05.2017

Objet : Fixation bandeau lumineux

Collaborateur : fco



profilé du plafond

$$7 \times 116 \times 62 = 5,124 \text{ m}^2$$

$$\times 2 \text{ unités} = 10,248 \text{ m}^2$$